

# ANNUAL REPORT

## 2017 - 2018



חינוך מעשה

*From Education to Action*



BUILDERS OF JEWISH  
EDUCATION

# Celebrating 80 Years While Focusing on the Future



Gil Graff

During 2017-2018, BJE celebrated the milestone of eighty years of Jewish educational leadership in Los Angeles. It marked this occasion not by looking backward but, as it has throughout the years, focusing on the future. Among the year's initiatives were "Leading Together," a leadership development program for board and professional heads of day schools; Project EnAble, aimed at enabling students with diverse learning needs to thrive in day school settings; the launch of a third cohort of First 36 Fellows, bringing deeper understanding of neuroscience to bear on meeting the developmental needs of young children; and the start of Reshet L.A., a project helping congregations re-imagine and introduce new models of part-time Jewish education. At the same time, such ongoing programs as BJE March of the Living, JKidLA/Concierge—connecting parents with Jewish educational experiences appropriate for their children—and BJE Impact, BJE's service learning initiative, touched the lives of thousands of students and families.



Mark S. Berns

Nothing as significant as Jewish educational leadership for the Jewish communities of Los Angeles can be provided exclusively by a lone entity. BJE benefits from partnerships with schools, a number of foundations including the Jewish Community Foundation of Los Angeles, the Jewish Federation and a wide variety of allied institutions. Jewish education is not about institutions; it is about individuals and families. The support of Jewish education, likewise, is not only institutional; it owes much to the individuals and families who share in this project.

Thank you for your partnership and support, enabling BJE to engage successive generations in meaningful Jewish learning experiences.

With best wishes in 2018-2019 (5779),

Gil Graff, Executive Director

Mark S. Berns, President

## Table of Contents

3.....	<i>Increasing Access</i>
3-4.....	<i>Enhancing Quality</i>
5-6.....	<i>Encouraging Participation</i>
7.....	<i>Looking Back</i>
8-10.....	<i>Looking Forward</i>
11-14.....	<i>Honor Roll of Donors</i>
15.....	<i>Financials at a Glance</i>
16.....	<i>BJE Officers</i>

## BJE 2017-2018 Staff

Elizabeth Abramowitz	Phil Liff-Grieff
Lauren Adelson	Monise Neumann
Arlene Agress	Alisha Pedowitz
Maya Aharon	Marie Perez
Chen Bain	Deborah Reissman
Candace Brand	Blythe Roque
Ben Golden	Leslie Silverstein
Gil Graff	Janice Tytell
Miriam Prum Hess	Liat Vorobiev
Rachel Kaplan	Millie Wexler
David Lewis	Betty Winn

## BJE 2017-2018 Board of Directors

Herb Abrams*	Dr. Simona Heumann	Linda Resnick
Michael Adler	Eileen Horowitz	Nurit Robin
Kathi Barnhard	Phalen G. Hurewitz*	Marc Rohatiner*
Susan Baum	Miriam T. Istrin	Craig Rutenberg
Mark S. Berns	Dr. Ernest R. Katz	Jay Sanders
Mayer Brenner	Mark Lainer*	Nancy R. Schulman
Max Candiotty*	Lisa Lainer-Fagan	Liz Rosman Schwartz
Rhea Coskey*	Jill Lasker	Steve Shapiro
Cheryl Davidson	Jill Lefferman	Bonnie Smigel-Derin
Keren Dunn	Amy Leibowitz	Bennett L. Spiegel
Dr. Bruce Ellman	Dr. Elaine Lindheim*	Marci Barnhard Spitzer
Janet Farber*	Linda Goldenberg Mayman*	Dr. Alan M. Spiwak*
Faith Gershbock	Adrian Miller	Sheila Baran Spiwak
Todd Gindy	Sheilah Miller	Jay Stein
Herbert Glaser*	Donna S. Nadel*	Tammy Temkin
Ilana Goldschein	Dorit Naftalin Nelson	Ben Tysch
Dr. Rachael Gordon	David Nimmer	Sam Yebri
Marjorie Gross	Mel Plutsky	Parham Zar

\*BJE past Chairs and Presidents

## BJE 2017-2018 Advisory Board

Angie Bass	Wesley Lester	Susan Jacoby Stern
George Caplan	Louis G. Miller	Rabbi Avrohom Stulberger
Bonnie Duboff	Jo Mintz-Seligman	Shari Weiner
Dr. Mark Goldenberg	Karmi Monsher	Tami Weiser
Betty R. Hamburger	Carole Oken	Mel Wynn
Ellen L. Jacobs	Sandra Radoff-Bernstein	Barbara Yaroslavsky
Stacy Reznikoff Kent	Norman Saiger	

## INCREASING ACCESS

### Addressing the Needs of Diverse Learners

As part of a multi-pronged effort to broaden and deepen attention to diverse learning needs, BJE organized several opportunities for day schools: BJE's Project EnAble, funded through



a grant from the Jewish Community Foundation, provides day school students educational support services, at reduced costs to parents, enabling students to succeed in the day school setting. During the 2017-18 academic year, Project EnAble partnered with four day schools: Cheder Menachem, Harkham Hillel Hebrew Academy, Kadima Day School, and Pressman Academy, to serve students with diverse learning needs.

Three schools, Adat Ari El, Emek Hebrew Academy, and Pressman Academy are also participating in B'yadeinu, an 18-month program sponsored through BJE with Boston's Gateways. The program assists schools

in undertaking a comprehensive needs assessments to strengthen their approaches in meeting the diverse learning needs of students.

More than 50 educators from 10 schools also participated in a day-long professional development program featuring Jonathan Mooney, a leader in advocating inclusive education to meet the needs of those who learn differently. The day focused on Building a Community of Inclusion within our day schools.

BJE looks forward to expanding its work to assist diverse learners by increasing the numbers of schools and students who will benefit from Project EnAble in 2018-19.

## ENHANCING QUALITY

### Board Development Cohort: Leading Together

On March 13, over 40 lay leaders and heads of schools, representing 10 L.A. Jewish day schools, gathered for the second session of BJE's Leading Together: Board Development Cohort. This 18-month BJE program, funded through a grant from the Diane P. and Guilford Glazer Fund, focuses specifically on the Head of School/ Board Chair partnership and how that strong relationship can serve the school's mission and community.

The second session focused on

fundraising and was conducted by Rae Ringel, a faculty member at the Georgetown University Institute for Transformational Leadership.

The program kicked off in November 2017 with a presentation by Pat Bassett, former Executive Director of the National Association of Independent Schools. Pat spoke about decision making, difficult conversations and crisis collaboration. A third session in October 2018, will be open to the entire board of each participating school and feature



Lay and professional leaders from Pressman Academy and De Toledo High School

Nanette Fridman speaking on Board Leadership 101 and Creating School Ambassadors. Participating schools also have access to coaching and Board Source's Board Self-Assessment.

“The BJE leadership cohort helped prepare me as the incoming VP of Education at Pressman Academy. This robust program provided expert coaching on how to build a strong board with both the how and the why behind each initiative. The guest speakers conveyed leadership as a process and provided a framework.”

–Jennifer Elad

“The workshops gave us a lot of help with our strategic vision. By attending these workshops together [school administrators and lay leaders], it's a shared experience, in which we're able to grow together— it gives us a common language we can use to move forward.”

–Larry Kligman, Head of School,  
Abraham Joshua Heschel Day School

# Building Resilience in Children through BJE Professional Development

## The 2018 BJE Bebe Feuerstein Simon Early Childhood Institute

built upon BJE's learning and partnership with the Simms/Mann Institute's The First 36 Project to focus on "The Whole Child" with the aim of nurturing a new generation of more resilient children. BJE was fortunate to have Dr. Pat Levitt, Simms/Mann Chair in Development

Neurogenetics, Institute for the Developing Mind, Children's Hospital Los Angeles, as the keynote speaker and facilitator at BJE's 37th Annual Early Childhood Institute. Nearly 300 early childhood educators from across



Dr. Pat Levitt



## 3rd Cohort of The First 36 Project

Top Row (left to right) Chana Blugrind - Yaldei Yisroel, Juliette Portnoy - Valley Beth Shalom, Chana Herzog - Gan Israel, Tarzana, Elana Banafsheha & Genevieve Turndorf - Wise School, Kira Rappaport - Pressman Academy, Andrea Segall & Edita Leifer - Temple Aliyah, Paula Hoffman - Ilan Ramon.

Bottom Row (left to right)

Rachel Tuch - Alice and Nahum Lainer School, Ailee Dembo - Valley Beth Shalom, Youna Yaghoobzadeh - Alice and Nahum Lainer School, Jaclyn Lafer - Kehillat Israel

Los Angeles gathered for the day of professional development, and an awards ceremony for distinguished early childhood educators.

Dr. Levitt's keynote, "Seeing the Whole Child", focused on the development of an early childhood curriculum. His research points to a child's physical and brain development early in life as being one of the key indicators of future educational outcomes. Participants also attended workshops which explored this relationship, including "Children and Media: How it Affects Children's Brains" and "Crawl, Run and Jump: How the Body Teaches the Brain to Think."

## The First 36 Project

inducted its third cohort of thirteen early childhood educators from nine BJE-affiliated schools, bringing the total number of trained educators to 36 and participating schools to 18.

The First 36 Project curriculum uses cutting-edge neuroscience research to provide a select group of parent-and-me instructors with an exclusive professional development experience designed to strengthen their ability to support parents as they build strong, meaningful bonds with their children. Fellows engage in cohort-based learning experiences, and receive one-on-one coaching and consultation, including class visits, observation and feedback. In addition, fellows have access to lectures and a curriculum with the latest information in child development and participate in an annual conference that brings together world-renowned neuroscientists studying how the brain develops during the first three years of life.

The First 36 Project, is an initiative of the Simms/Mann Institute, and is implemented in collaboration with BJE and the Jewish Federation of Greater Los Angeles.

“Working with BJE and the First 36 Project has been invaluable to us at Ohr Eliyahu. We're so thankful to have professional development opportunities like the First 36 Project and the Early Childhood Educators' Institute. Even if the teachers only come away with one new idea, that one new idea is worth it, because it informs what they're doing in a way that becomes exponential. When teachers get professional development during the school year, it renews, inspires, and boosts them. The excitement they come back with is contagious, it spreads to the parents, it spreads to the staff members, and most importantly, it spreads to the kids.”

- Shayna Goldman, Early Childhood Director, Ohr Eliyahu

# Becoming Witnesses on BJE March of the Living

*“When you hear a witness, you become a witness”*

- Elie Wiesel

According to a recent article in the *New York Times*, 41% of Americans and 66% of Millennials cannot say what occurred at Auschwitz. Since 1992, BJE has partnered with the International March of the Living to bring teens and adults to Poland and Israel in order to keep the memory of the Shoah from fading, by providing firsthand experience and education which leads to action. The 2018 BJE March of the Living delegation consisted of 214 teens, from 36 synagogues and 17 schools, along with 25 staff members, and 5 Holocaust survivors who marched in solidarity with Jews from all over the world from Auschwitz to Birkenau.

## Join BJE March of the Living in 2019

2019 will include a BJE Adult March of the Living trip guided in Poland by renowned Holocaust historian, Dr. Michael Berenbaum, and joined at times by survivors, in addition to the annual teen trip. For more information about the 2019 BJE Adult March please visit [www.bjela.org/2019AdultMOTL](http://www.bjela.org/2019AdultMOTL); for the 2019 BJE teen trip, please visit [www.bjela.org/MOTL](http://www.bjela.org/MOTL)

*“The Poland of my imagination was a black-and-white charnel house— grotesque and forbidding. After going on BJE’s Adult March of the Living, I realized that the country exists in technicolor— yes, monstrous sites juxtaposed against centuries of rich Jewish history, seeds of Jewish renewal. My wife and I conquered our fears to go on this journey— and consider ourselves richly rewarded.”*

- David Nimmer, BJE Board Member, 2016 Adult March of the Living Alumnus

# ENCOURAGING PARTICIPATION 2018 March of the Living

## REMEMBER. EDUCATE. ACT.



Alice Gerstel Weit and Simon Gronowski

BJE March of the Living’s theme, “Remember, Educate, Act” was also reinforced throughout the year in the teen pre-trip Farber educational workshops as well as reunions for teens and adults. This year, March of the Living staff and adult alumni were also treated to a talk given by Simon Gronowski, a Holocaust survivor who, in April, was reunited with childhood friend and survivor Alice Gerstel Weit, after 76 years.

As a child, Alice and her family had been hidden by Simon’s parents in their home in Belgium, prior to being sent to Auschwitz.

Shortly after the Gerstel family fled Europe for the safety of Cuba, Mr. Gronowski, then age 11, was taken from his home in Brussels and sent, along with 1600 other Belgian Jews, to die in the gas chambers of Auschwitz-Birkenau. He recounted his harrowing tale of escape to the gathered alumni:

*“I didn’t realize that I’d been condemned to death and that this train would lead to the place of my execution. By a miracle, I jumped off the train and escaped. I ran all night through the woods... I arrived at dawn in a village and got to a small house which gave me trust. I rang the bell. I said to the lady, ‘Madam, I played near here with other children, I got lost and I have to go back to Brussels, to my father. She took me... to the next town, and dropped me at a gentleman’s house... He said to me ‘I know everything, you were in the train with the Jews. You have escaped but you must not be afraid. I am a good Belgian and I will not betray you.’”*



2018 BJE Teen delegation at Auschwitz

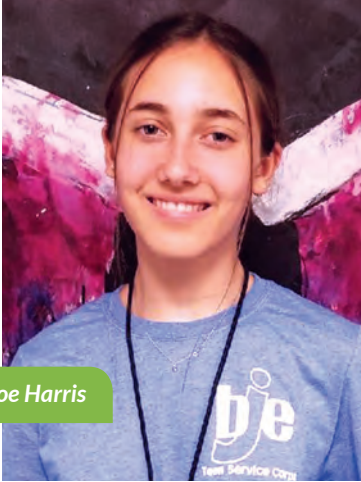


*These deniers are so dangerous. They deny the crimes of the past and commit new crimes tomorrow.”*

Mr. Gronowski believes it’s important to retell the story: “The Holocaust deniers say that all of this is not true: ‘there were no gas chambers, no crematoriums, no mass murder.’ I only wish they were right because then I would have kept my family.

# Impacting the Community through BJE Teen Service Corps

Chloe Harris is passionate about volunteer service. For the past three years, Chloe has been a part of BJE's Teen Service Corps, and it inspired her to take on volunteer opportunities



Chloe Harris

throughout the city year-round. At 15, the rising sophomore at Milken Community High School has volunteered with several charities including Heal the Bay, No Kill LA, and Food Forward, an organization whose activities include preparing meals from unsold farmers' market food, and distributing the meals to the homeless.

"Living in the bubble of West LA, you don't really see a lot of the problems that are going on in the greater community. All my life I've been taught, at home, at school, and in synagogue, that it's my responsibility to give back to the community. I'm grateful to have the opportunity to participate in Teen Service Corps because I get to see

what's going on outside of my bubble, and to do something about it."

Since 2011, BJE's Teen Service Corps has created meaningful Jewish service learning experiences for kids and teens throughout Los Angeles. This year, students undertook Jewish service learning projects supporting such local charities as LA Kitchen, Mazon, the Pico Union Project, Baby2Baby, and Worthy of Love. In addition to engaging in community service projects, Teen Service Corps participants reflect on their service experiences through the lens of Jewish texts and values.

If your child is interested in participating in Teen Service Corps, visit [BJELA.org/ServiceCorps](http://BJELA.org/ServiceCorps).

## BJE@80 and Moving Forward



### BJE Celebrates Shabbat

Families of all ages across Los Angeles gathered for BJE's Night of 80 Shabbats in celebration of BJE's 80th anniversary and Jewish Education. **This year's BJE Shabbat Celebration will take place on November 30, 2018.** To participate, please go to: [www.bjela.org/shabbat](http://www.bjela.org/shabbat)

### Day of Service Learning

Children and families from all over L.A. learned more about BJE Impact: The Center for Jewish Service Learning through a meaningful day of Jewish service learning last October.

**This year's Day of Service Learning will take place on October 21, 2018.** For more information please go to: [www.bjela.org/dayofservice](http://www.bjela.org/dayofservice)





# LOOKING BACK THANKING OUR DONORS 2018 GALA

In celebration of its 80th anniversary, BJE honored three pillars of the Los Angeles Jewish Community,

Jean and Dr. Jerry Friedman — founders of Shalhevet High School, and Bennett Spiegel, an active BJE board member and officer. BJE also recognized Keren Dunn with the prestigious Young Leadership Award.

BJE's January 16 Gala—co-chaired by Jennifer Elad, Jill Lasker, and Réna Slomovic—drew an attendance of over 450 people, and generated net proceeds of \$385,000, thanks to BJE's honorees and generous donors.

Thank you to everyone who supported the 2018 BJE Gala for making it a truly unforgettable evening.



Gala honorees, co-chairs and BJE leadership

*BJE is always reinventing itself to meet the needs of the community. It is always willing to think outside the box, take the balcony view of what is best for the total community, and bring programs of tremendous impact to Los Angeles. That is why we believe so deeply in this organization.*

- Jean & Dr. Jerry Friedman

*"Lighting the fire" is a metaphor for learning through taking concrete steps to be a positive light in the world through action. That kind of learning is exemplified by the BJE Teen Service Corps where teens are actively involved in meaningful community service here in LA.*

- Bennett L. Spiegel

*Remembering and honoring the past, while looking ahead and planning for the future...nobody does this better and more wholeheartedly than BJE, whether it is planning for a meaningful and impactful March of the Living experience once there are no more Holocaust survivors to join the trip; ensuring that a Jewish Day School education is accessible to those who choose this path in an era of rising tuition; reimagining religious school to meet the needs and desires of today's and tomorrow's students and families; or teaching and promoting service learning in a world that needs citizens committed to civic responsibility more than ever.*

- Keren Dunn

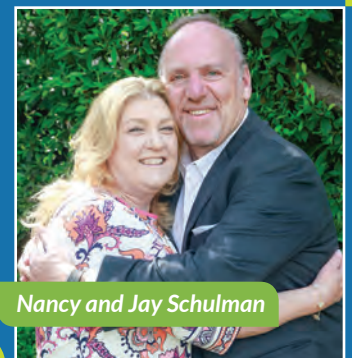
## BJE DONOR THANK YOU EVENT



Mitchell Schwartz and Liz Rosman Schwartz



Pella



Nancy and Jay Schulman

As BJE's fiscal year drew to a close, BJE dedicated a Sunday morning to thanking its Donor Society members for their support and enabling us to reach our fundraising goal. The May 6, 2018 thank you event was generously hosted by Liz Rosman Schwartz and Mitchell Schwartz, in the garden of their Larchmont Village home.

Attendees were treated to a sumptuous brunch, a roving a cappella group – Pella ("the Jewish Glee"), and a fascinating talk on "The Evolution of Jewish Music" given by Dr. Mark Kligman – Mickey Katz Professor of Jewish Ethnomusicology at UCLA's Herb Alpert School of Music. The event was chaired by Liz Rosman Schwartz and Nancy Schulman.



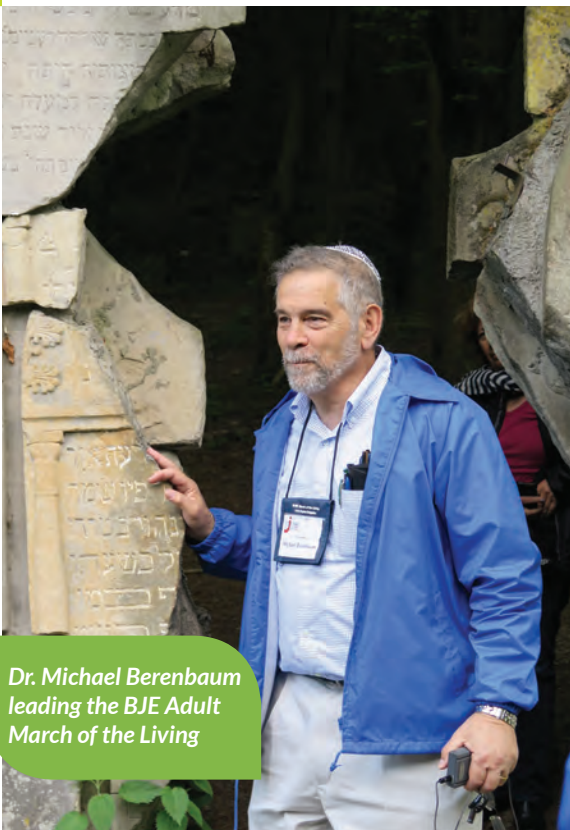
## LOOKING FORWARD

# Inspiring Action Through Deep Jewish Learning -

## BJE's 2019 Gala

חַיֵּנוּ מֵעַשָּׂה

BJE's 2019 Gala will recognize three individuals - representing orthodox, reform and conservative Jewish affiliations - who have each applied their deep Jewish learning to make a difference in the world.



Dr. Michael Berenbaum leading the BJE Adult March of the Living

**Dr. Michael Berenbaum** is a distinguished Holocaust historian. He played a leading role in the creation of the U.S. Holocaust Memorial Museum and served as the first director of its Research Institute. In 1997, he moved to L.A. to become President and CEO of the Survivors of the Shoah Visual History Foundation. Michael now serves as the Director of the Sigi Ziering Institute on Exploring the Ethical and Religious Implications of the Holocaust at American Jewish University. Michael has dedicated his career to teaching the Holocaust across a multitude of formats, from university classrooms to documentary and dramatic films and museum exhibitions.

"BJE is a natural part of any organized community that has commitments to Jewish education," Michael said.

Michael is most familiar with BJE's March of the Living, having served as the scholar in Poland for two BJE Adult trips so far, with a third coming up in 2019.

"I think BJE has made a deep and profound commitment to the March of the Living, and has done so exceptionally well," he said. "Pilgrimage is a unique experience. Every journey outward is also a journey inward. So the March, as a pilgrimage, needs to be viewed on two levels: One is the self-exploration of the students, and the other is what it is that they see, and what it is they see together."





(from left to right and top to bottom)  
 Marcia and David Nimmer with  
 granddaughters Ella and Rebecca Nimmer

**David Nimmer** is an international expert on copyright law, annually updating *Nimmer on Copyright*, the field's standard reference. Of counsel to Irell & Manella LLP, David also serves as Professor from Practice at UCLA Law School and guest professor at numerous universities across the world. David has woven his passion for Jewish learning into his professional work by authoring articles on the overlap between halakha and copyright. David serves on the board of BJE and is a past president of B'nai David-Judea Congregation where, 14 years ago, he established an ongoing lunch for the homeless. He was previously on the boards of Maimonides Academy and Shalhevet High School.

David participated in the 2016 BJE March of the Living. Of his journey he says, "it was truly the highlight of my life, to come together with all of those age groups from Los Angeles for a common cause, and to commemorate the victims of the Holocaust. And to experience that with Holocaust survivors themselves, that was an extra blessing."



Betty, Ryan, Brie (Dorfman), and Ross Winn

**Betty Winn** has served tirelessly in Jewish and secular education and charitable causes for decades. As past Head of School at the Abraham Joshua Heschel Day School and current Senior Consultant at BJE's Center for Excellence in Day School & Early Childhood Education, Betty has worked to strengthen Jewish education across Los Angeles by creating professional development opportunities and enhanced communities of practice for educators, admissions directors and development personnel.

"Jewish education provides a child with an excellent educational experience, while also helping to instill Jewish values and helping them truly understand the importance of community."

In addition to her professional role, Betty actively participates as a lay leader on numerous committees at Wilshire Boulevard Temple, and has been involved for over thirty years with LA Family Housing, a local charity that works to combat homelessness.

"We feel so blessed and feel it's our responsibility to share with others. Helping to feed the hungry and clothe the naked, and provide shelter for the homeless; those are all Jewish values."

*Michael, David, and Betty's children, who were raised in Los Angeles, all attended BJE affiliated early childhood centers and day schools. Their local grandchildren also attended BJE-affiliated schools.*

# Welcoming BJE's New Officer and Directors



**Craig Rutenberg** is a partner at Manatt focusing on complex civil litigation matters primarily in healthcare and real estate. Originally, from Highland Park, IL, Craig joined the Jewish Federation's Legal Division in 2003, and is currently the Chair of the Division. At the Federation, he remains involved with awarding grants to participants of Jewish camps and BJE March of the Living, through which he became acquainted with BJE. Now beginning his fourth year on the BJE board, Craig will serve as BJE Treasurer in 2018-19. Craig and his wife Stephanie have two children, Jonah, who attends Brawerman Elementary School, and Sloane, who will soon enough.

*"I really liked the people at BJE that I was meeting and I was very impressed with their mission of ensuring the future of Jewish education in Los Angeles, in whatever mode fit with the families. I believe we should teach our children about Jewish customs, history, and traditions for the same reason we teach our children reading at an early age. If you want good Jewish adults, you have to start with good Jewish children. And the way to make good Jewish children, is through Jewish education."*



**Ellen Cervantes** brings over 40 years' experience in cultivating the well-being of children and families to the BJE board. As Chief Operations Officer of the Child Care Resource Center, Ellen oversees programs to strengthen families, and provide early care and education, for children birth-five years of age. Prior to relocating to Los Angeles from Chicago in 2001, Ellen worked in Jewish communal services for 25 years. Ellen is past President of Shomrei Torah Synagogue. She and her husband Don are the parents of two adult daughters.

*"I have a passion for Jewish education. Building educated and interested Jewish children is the key to creating educated and interested Jewish adults, and the key to building our Jewish future."*



**Sharon De Mayo**, a native of Rome, moved to Los Angeles in 2009 with her husband, from Portland. She had no sooner settled in a new city than she became involved with Jewish education in her community. Currently the Vice President of Education on the executive committee at Temple Isaiah, Sharon has served on numerous committees related to education in her eight years of service with the congregation. Sharon and her husband Luca's children attend Temple Isaiah's Religious School.

*"I grew up having a very strong sense of the importance of education as it relates to Jewish history and Judaism. BJE seemed like a natural progression from my focus on education at Temple Isaiah. I'm looking forward to creating more connections that will be of value to all of the stakeholders."*



**Aaron Leibovic**, originally from Brooklyn, NY is a lawyer and principal of Health Advocates, a public advocacy organization, and Leibovic Law Group. Aaron served as Board Chair at Sinai Akiba Academy and Milken Community Schools and on numerous boards including Sinai Temple and the Ziegler Rabbinical School at American Jewish University. Aaron and his wife Sheila's three daughters graduated from Los Angeles Jewish day schools.

*"I've always believed that it's important for the Jewish community in America, that there be Jewish education, and a means to support it. I'm excited to take on this position on the BJE board, and to share my ideas about making sure every child has the opportunity to receive a Jewish education."*



**Alan Petlak**, a Los Angeles native and alumnus of L.A.'s Harkham Hillel Hebrew Academy and YULA Boys High School, is a mediator who specializes in real estate and business related matters. He earned his undergraduate degree from UC San Diego and his law degree from the USC Gould School of Law. Alan and his wife, Lisa, have three children, all of whom attend BJE-accredited Jewish day schools.

*"I'm honored to have been asked to join the BJE board. Jewish education is of paramount importance to building a Jewish future for the next generation, and I'm thrilled at the chance my membership on the BJE board will provide me to use my personal and professional experience to help ensure a sustainable Jewish future."*

# Supporting Jewish Education: Honor Roll of Donors

Gifts of \$100+ received July 1, 2017 – June 30, 2018

BJE gratefully acknowledges the essential support of the donors and organizations whose generosity enables BJE to provide ongoing services and programs to enhance quality, increase access, and encourage participation in Jewish education.

## PILLAR

\$500,000 - \$999,999

The Jewish Federation of Greater Los Angeles  
Simha and Sara Lainer Family Foundation

## SUSTAINER

\$100,000-\$499,999

Janet & Jake Farber\*  
Jerry and Jeanine Goldberg Trust\*  
Jewish Community Foundation  
Milken Family Foundation  
Simha and Sara Lainer Day School Endowment Fund

## TRAILBLAZER

\$50,000-\$99,999

Jean & Dr. Jerry Friedman  
Ellie & Mark Lainer\*  
Max & Anna Baran, Ben & Sarah Baran & Milton Baran Endowment Fund\*  
Dr. Susan Plutsky & Mel Plutsky  
Simms/Mann Family Foundation

## TRUSTEE

\$25,000-\$49,999

Diane P. & Guilford Glazer Fund\*  
Erwin Rautenberg Foundation  
J. Samuel Harwit<sup>21</sup> and Manya Harwit-Aviv<sup>21</sup>  
Charitable Trust  
Judith & Louis G. Miller  
Simha and Sara Lainer Fund for Jewish Education\*  
Dr. Lise F. Spiegel & Bennett L. Spiegel  
Sheila Baran Spiwak & Dr. Alan M. Spiwak  
The Sigi<sup>21</sup> and Marilyn Ziering Family

## BENEFACTOR

\$10,000-\$24,999

Anonymous (2)  
Penny & Mark Berns  
Bertha, Erwin, & John Lustig Welfare Fund\*  
Claire & Rabbi Baruch Cohon  
Elyssa & Gil Elbaz  
Sharon & Herb Glaser  
Robin & Gil Graff  
In Loving Memory of  
Ben & Sarah Baran and Milton Baran  
Victor & Lisa Kohn  
Lainer Israel Interns Endowment Fund\*  
Drs. Jack & Gitta Nagel  
Jodi & Greg Perlman  
Nurit & Rich Robin  
The Rosalinde and Arthur Gilbert Foundation  
Sandra and Marvin Schotland Israel Endowment Fund\*  
Nancy & Jay Schulman

## GUARDIAN

\$5,000-\$9,999

Anonymous  
Abraham Joshua Heschel Day School  
Herb S. Abrams  
Dr. Brenda Fabe & Michael Adler  
Barbara & Albert Algaze  
Susan & Michael Baum  
Bob and Nita Hirsch Family Foundation  
Bolotin Fund\*  
Sandra & Mayer Brenner | Apple Matching Gifts\*\*  
Rhea Coskey  
Fannie P. Wienir Scholarship Endowment  
for Jewish Studies\*

Field Family Fund  
Roslyn & Abner Goldstine  
Marjorie & Robert Gross MD  
Vera Hart  
Miriam Prum Hess & Mark L. Hess  
Hillside Memorial Park and Mortuary  
Jacob Hillel Stern Memorial Fund\*  
Lela & Dr. Norman Jacoby  
Jean and Jerry Friedman Shalhevet High School  
Joe R. Spizman Family Fund  
Charlotte & Stanley Kandel  
Debra & Robert Kasirer  
Paul Kester  
Lee & Luis Lainer  
Roberta & Wesley Lester  
Shirley & Phil Liff-Grieff  
Dr. Elaine & Richard Lindheim  
Milken Community Schools  
Adrian & Larry Miller  
Karmi & Harold Monsher  
MUG Union Bank N.A.  
Donna & Paul Nadel  
Marcia & David Nimmer  
Natalie Roberts  
Peggy & Edward B. Robin  
Lynn & Marc Rohatiner  
Sam & Bessie Gutlin Scholarship Fund\*  
H. Stephen Schloss  
Angel & Alan Schneider  
Gail & Steve Shapiro  
Smotrich Family Foundation  
Dr. Rachael Gordon & Don Snyder  
Sol & Ruth Gerber Endowment\*  
Marci Barnhard Spitzer & Dr. Andrew Spitzer  
Susan Jacoby Stern & Joel Stern  
Ernest A. Vargas  
Witkin Family Trust

## SUPPORT CIRCLE

\$2,500-\$4,999

Anonymous  
Adam & Gila Milstein Family Foundation  
Adat Ari El Synagogue and Day School  
David Amsterdam  
Rhoda & Dr. Robert Barnhard  
Bernard & Mollie Levin Fund\* - Ellen L. & Marty Jacobs  
Rosanna Bogart  
Irene & Yoni Boujo  
Peni & Rabbi Daniel Bouskila  
Sandy & Max Candiotty  
Sandy & Bob Carroll  
Catapult Learning LLC  
Kristina & Jason Cole  
Cheryl & William Davidson  
Alyce & Philip de Toledo  
Molly Forrest & Erwin Diller  
Steven Dorfman  
Keren & Leonard Dunn  
Rabbi Michelle Missaghieh & Dr. Bruce Ellman  
Feder Family Foundation  
Larry Fields  
Debra & Tim Fletcher  
Andrea Narins & Larry Gill  
Doris & Ernest Goodman  
Lori & Robert Goodman  
Nat Gorman  
Marlene & Marshall Grossman  
Joelle & Daniel Gryczman

Lisa & George Hess  
Kathi Barnhard & Gary Hiller  
Miriam & Jonathan Istrin  
Jack E. & Rachel Gindi Family Foundation\*  
Estate of Morris Knopow\*  
Richard W. Labowe  
Sheila & Aaron Leibovic  
Esther & Jose Liberman  
Vera & Harold Markowitz  
Linda Goldenberg Mayman & Robert M. Mayman  
Dr. Chavee Lerer & Victor Mellon  
Sheilah & Dr. Donald Miller  
Myra & Bruce Newman  
Julie & Marc Platt  
Linda & Jeffrey Resnick  
Roberta Goodman-Rosenberg & David L. Rosenberg  
Stephanie & Craig Rutenberg  
Lee Samson  
Dr. Claudia Wallack Samuels & Sandor Samuels  
Helen & Moshe Sassoover  
Alice Schoenfeld  
Liz Rosman Schwartz & Mitchell Schwartz  
Réna Slomovic  
Sari & Jay Stein  
Anna & William Tenenblatt  
Paul Venze  
Helga & Elia Weinbach  
Shari & Michael Weiner  
Whizin Philanthropic Fund  
Shelley & Richard Wynne

## CHAI SOCIETY

\$1,800 - \$2,499

Anonymous  
Camille & Arnon Adar  
Elke Coblens Aftergut & Emanuel Aftergut  
Alice and Nahum Lainer School  
Marlisse & Gary Bachrach  
Donna & Ron Bender  
Lynn & Leslie Bider  
Cedars-Sinai Medical Center  
L. Larry Clumeck - Clumeck, Stern,  
Schenkelberg & Getzoff  
Rochelle & Freddy Cohen  
Faith & Jonathan Cookler  
Mikhla & Alan Dauer  
Selma Daye  
Lisa Lainer-Fagan & Brian Fagan  
Carrol & Jack Fenigstein  
Susie & Jaime Gesundheit  
Ilana & Gil Goldschein  
Dr. Steven Hochstadt & Stephen Sass  
Nelly Kahn  
Jeffrey Kandel  
Loretta & Norton Karno  
Stacy Reznikoff Kent & Ranon Kent  
Aliza & Michael Lesser  
Janine Winkler Lowy  
Dee & Jeff Margolis  
Oskar Schindler Humanities Foundation\*  
Leslye & Dr. Samuel Prum  
Samuel and Helene Soref Foundation -  
Irma & Ben Breslauer  
David Silverstone  
Tammy & David Temkin  
Shoshana & Parham Zar  
May & Richard Ziman

**\$1000-\$1799**

Anonymous (2)  
 Norm & Toshka Abrams  
 Lauren Aslatei Adler & Mitch Adler  
 Greta Bayer  
 Beatrice Schultz Endowment Fund\*  
 Beth Jacob Congregation of Beverly Hills  
 Joan Ashton & Stanley Black  
 Dr. Helene Rosenzweig & Richard Bock  
 Sandra & Robert Braun  
 Marilyn Brown  
 Carol & Jerry Coben  
 Hazel & Abraham Cohen  
 Jennifer & Curtis Cohen  
 de Toledo High School  
 Bonnie Smigel-Derin & Greg Derin  
 Marilyn & Rabbi Elliot Dorff  
 Dorothy & Lou Schotland Endowment Fund\*  
 Edith and Joseph Harris Endowment Fund\*  
 Jennifer & Dr. Yaron Elad  
 Pat & Sandy Gage  
 Beverly & Herb Gelfand  
 Gindi Maimonides Academy  
 Elaine Leemon Binder Robinson & Lou Hasson  
 Ada & Jim Horwich  
 Renee & Chuck Hurewitz  
 Jacqueline & Alex Jacobs  
 Joanna Kasirer & Joshua Kaplan  
 Frieda & Dr. Ernest Katz  
 Kenneth J. & Marilyn J. Friedman Family Foundation  
 Nancy & Howard Klein  
 Hana & Joseph Kornwasser  
 Hannah & Marshall Kramer  
 Sharon & Gordon Krischer  
 Lynne & Jeff Lainer  
 Hillel Laks  
 Jill & Martin Lasker  
 Lynda & Bernard Lax  
 Sidonia Lax  
 Jill & Dr. Matthew Lefferman  
 Ann & Scott Lieberman  
 Manuel & Barbara Wertheimer Endowment Fund\*  
 Adria & Phil Metson  
 Jo Mintz-Seligman  
 Alexandra Leichter & Michael Moroko  
 Dorit Naftalin & Harry Nelson  
 Carole Oken  
 Sandy Silas & Perry Oretzky  
 Helen & Frank Ponder  
 Linda & Larry Rauch  
 Janet Salter  
 Esther Cohen & Barry Schwartz  
 Annette & Dan Shapiro  
 Ted Slavin  
 Gladys Sturman  
 Temple Beth Am/Pressman Academy  
 Rachel Andres & Ben Tysch  
 Halina Wachtel  
 Suzette J. Wachtel  
 Monika Wiener  
 Felice & Douglas Williams  
 Betty & Ross Winn  
 Yavneh Hebrew Academy  
 Fran & Stuart Zimmermann

**\$500-\$999**

Anonymous  
 Nancy & Dr. Emanuel Abrams  
 Dr. David Ackerman  
 Jenny & Aaron Aftergood  
 Sara & Dr. David Aftergood  
 Anita & Harold J. Zivetz Scholarship Fund\*  
 Maida & Zvi Aviad  
 Peggy & Sanford Baddin  
 Galina Berkovich  
 BJE Ulpan Participants' Fund\*  
 Dr. Leila & Rabbi Joseph Bronner

Linda & Steven Brown  
 Dity & Gideon Brunn  
 Sharon Shaw Butler & Artie Butler  
 The Honorable MeraLee Goldman & Jay Canel  
 Dr. Meredith Dunn & Cary Clarke  
 Debra & Albert Cohen  
 Hilda Cohen  
 Judy & Dr. Daniel Cole  
 Dvorah Colker  
 Karen & Ted Coyne  
 Arlene & Gerald Davis  
 Deborah & Jeff Deane  
 Bonnie & Allan Duboff  
 Maureen & Larry D. Eisenberg  
 Rebekah & Howard Farber  
 Mark Finfer  
 Shari & Jeffrey Fishman  
 Faith & Richard Gershbock  
 Elaine & David A. Gill  
 Gisele Mandl Scholarship Fund\*  
 Drs. Liz & Cary Glass  
 Deborah & Dr. Mark Goldenberg  
 Dr. Judith Marlane & Ron Goldman  
 Sandy & William Goodglick  
 Senta & Dr. Chaim Graff  
 Vicky Green  
 Laura & Jonathan Greenburg  
 Fran & Joel Grossman  
 Hebrew Union College  
 Nadine & Murdoch Heideman  
 Shirley Hess  
 Simona & Steven Heumann  
 Melissa & Oren Hirsch  
 Hochberg Family Philanthropic Fund  
 Brooke & David Horowitz  
 Eileen & Steven Horowitz  
 I.A. & A.I. Reiss Memorial Fund\*  
 Dr. Jacqueline Heller & Gabriel Kahana  
 Kehillat Israel - Cantor Chayim Frenkel & Rabbi Nick Renner  
 Wendy & Richard Kellner  
 Barton H. Kogan  
 Janine & Richard Kolodny  
 Mary Beth & Robert Kors  
 Dr. Lisa & Gary Lainer  
 Serene Lazar  
 Roslyn & Joel Linderman  
 Anika Lorber  
 Evy & Marty Lutin  
 Iris & Philip Malinsky  
 Max Rauch Memorial Fund\*  
 Shlomo & Ilana Melmed  
 Wendy Wolf & Mitch Menzer  
 Ilana & Mark Meskin  
 Cheryl & Ronald Nagel  
 Paulette & Ron Nessim  
 Dr. Anna Baum Novack & Barry Novack  
 Julia Papiyan  
 Rachel & Roger E. Parrell  
 Wanda & Avi Peretz  
 Lisa & Alan Petlak  
 Joyce & David Primes  
 Abby Robyn  
 Judy & S. Alan Rosen  
 Lois & Rabbi Moshe Rothblum  
 Galina & Joseph Samuel  
 Sara & Jay Sanders  
 Kim & Darryl Schall  
 Sheri & Arnold Schlesinger  
 Hal & Lenny Schloss  
 Marieka & Daniel Schotland\*  
 Debbie & Gil Schwartzberg  
 Ellen Shallman  
 Annette & Leonard Shapiro  
 Gini & Norton Sharpe  
 Julie Higashi & Dr. Robin Shaw  
 Debra Fields & Jonathan Silberman

Rita & Jack Sinder  
 Susan Fink & Robert Smith | Mass Mutual Matching Gift\*\*  
 Caren & Erwin Sokol  
 Marion & Matthew Solomon  
 Drs. Fredelle & Steven Spiegel  
 Steven C. Gordon Family Foundation  
 Linda & Dr. Steve Tabak  
 Marshall Temkin  
 Janice Tytell  
 Sharona & Afshin Veiseh  
 Rodi & Rabbi Stewart L. Vogel  
 Julie & Peter Weil  
 Eleanor & Barry Weinstock  
 Shelley & Dr. Steven Weinstock  
 Marla & Stuart Weiss  
 Wise School  
 Leah & Sam Yebri  
 Rosalie Zalis  
 Marcie & Howard Zelikow

**\$250-\$499**

Anonymous  
 Desiree & Fred Afari  
 Maya & Ehud Aharon  
 Honey Kessler Amado  
 Devorah & Yonatan Asher  
 Laura Barton  
 Nancy & Scott Beiser  
 Regina & Gary Benson  
 Allison & Larry Berg  
 Janis & the Honorable Howard Berman  
 Teri & Bruce Bialosky  
 Bobbie Weiser Blau & Carl Blau  
 Arlene & Stewart Bloom  
 Emily & Michael Chasalow  
 Cheder Menachem  
 Rita Chotiner  
 June Claman  
 Jill & Andrew Cohen  
 Ami & Joe Cohen  
 Claire & Oren Cohen  
 Ellen & Marshall Cole  
 Charlotte & Christopher Combs  
 Scott Dettmer  
 Deborah Smotrich Diamond & Eric Diamond  
 Rivka & Reuben Dori  
 Cindy & Dr. Noam Drazin  
 Dana & Rick Entin  
 Ethel & Abe Weinberg Jewish Education Fund\*  
 Niva & Jeremy Faith  
 Susan & Dr. David Farkas  
 Janet Bain Fattal  
 Nancy Cooper-Federman & Neal Federman  
 Rochelle & Gary Finder  
 Rachel Finegood  
 Gerri Lee Frye  
 Eveline & Uri Ginzburg  
 Arnold Gittelson  
 Tina & Michael Gittelson  
 Larry Gold  
 Ivonne & Daniel Goldberg  
 Rheba Ganzweig Goldman  
 Gordy Goldsmith  
 Dorothy Goren  
 Susan Kaiser Greenland & Seth Greenland  
 Cathy Halfon  
 Efreem Harkham  
 Lee & Murray Hausner  
 Dr. Betsy Newman & Howard Heitner  
 Hannah & Bryce Hellman  
 Adi Hepner  
 Jeanne & David Herman  
 Robbin Itkin  
 Marcia Josephy  
 Kadima Day School  
 Maggie Katzenberg

Vicki & Arnie Kay  
 Susan Bloch & Stephen Kay  
 Marc Kaye  
 Lisa & Jeremy Kolieb  
 Arlene & Moshe Kupietzky  
 Jesse & Dr. Dan Lainer-Vos  
 Barbara & Dr. Ron Lang  
 Laurie Glickman & Jim Leewong  
 Bill Lepler  
 Ruth Orloff & Michael Levin  
 Rabbi Leah Lewis & David Lewis  
 Tamy & Brian Linver  
 Sherry Hackett & David Loftus  
 Jennifer Glazer Malkin  
 Eve Marcus  
 Victoria Maroulis  
 Amy & Harold Masor  
 Marcie Meier  
 Mesivta of Greater Los Angeles (Calabasas) -  
 Rabbi Shlomo Gottesman  
 Susan & Arthur Mishler  
 Daniel Moshi  
 Mt. Sinai Memorial Parks and Mortuary  
 Jill & Steven Namm  
 Esther Netter  
 Veronica & Paris Nourafchan  
 Robin Nourmand  
 Deedy Oberman  
 Linda & Bart Pachino  
 Ruth Shamir Popkin  
 Deborah & Dr. Bruce Powell  
 Heidi & Albert Praw  
 Vicky & Sam Praw  
 Susan & Dr. Joshua Pretzky  
 Miriam & Dr. Ronald Reynolds  
 Janice Kamenir-Reznik & Benjamin M. Reznik  
 Barrie & Chuck Richter  
 Rabbi Karen Fox & Michael Rosen  
 Irene & Norm Saiger | Bank of America\*\*  
 Elaine Schenirer  
 Dana & Evan Schlessinger  
 Debbie & Neil Schwartz  
 Millie Senensieb  
 Sandra & Albert Shadgoo  
 Sharon Mintz & Steven Shapero  
 Rita Shapiro  
 Susie & Steven Shoham  
 Barbara Blake & Michael Silvera  
 Selma & Philip Silverman  
 Lori Sinanyan  
 Susan & Saul Smith  
 Sol Bear & Esther Lipshutz Memorial Fund\*  
 Anne & Elon Spar  
 Ruth & Sol<sup>27</sup> Teichman  
 Temple Emanuel of Beverly Hills  
 Yael & Dan Tenenbaum  
 Shirley & Saul Turteltaub  
 Naomi Zimmermann & Alan Van Gelder  
 Charlotte Wasserstein  
 Jackie & Michael Waterman  
 Barbi & Larry Weinberg  
 Sanford Weiner  
 Ruth Weisberg  
 Millie & Paul Wexler  
 Lesley & Jeffrey Wolman

#### \$100-\$249

Anonymous (2)  
 Jean & Jay Abarbanel  
 Dana & Chuck Abel  
 Elizabeth & Howard Abramowitz  
 Lauren Adelson  
 Rabbi Rachel Adler  
 Marlene Aframian  
 Dr. Michael & Arlene Agress  
 Hillary Oberstein & Anthony Alden  
 Michele & Grant Alkin

Miriam & Marvin Alperin  
 Joyce & Kevin Anderson  
 John Antignas & Rabbi Susan Laemmle  
 Samantha & Michael Auerbach  
 Bais Chaya Mushka  
 Ben Barak  
 Sharon & Alex Baskin  
 Matt Benjamins  
 Elaine Berke  
 Debra & Alan Berman  
 David Black  
 Rochelle & Jeff Boren  
 Karen Hermelin & Mark Borman  
 Susan & Jonathan M. Brandler  
 Barbara & Dr. Richard Braun  
 Sandra Stillwater & Jerome E. Bulavsky  
 Jan & Richard Burns  
 Hallie & John Cameron  
 Janice Chernoff  
 Susan Zneimer & Martin Chetlen  
 Jeri & Ira Cohen  
 Joelle & Martin Cohen  
 Nita Corinblit  
 Eleanor & Dr. Bernard Davidorf  
 Barbara & Ed Dreyfus  
 Emek Hebrew Academy  
 Dalia & Dr. Daniel Farkas  
 Rabbi Ruth Sohn & Dr. Reuven Firestone  
 Diane & Jerry Forman  
 Frann Francis  
 Essia Cartoon & Howard Fredman  
 Wendy Freed  
 Jackie Freedman  
 Carin & Glenn Freeman  
 Beth Sussman & Bill Freiburger  
 Lora Fremont  
 Rozanna & Randy Fried  
 Helyn & Robert Friedman  
 Jill & Lenny Fromer  
 Rita & Dennis Funk  
 Julie Monkash Gadinsky  
 Barbara & Simon Gamer  
 Liebe & Dr. Ivor Geft  
 Debbie & Morris Gelbart  
 Flora Glouberman  
 Annis Golden  
 Melanie Goldfiner  
 Dr. Annette & Rabbi Mel Gottlieb  
 Joni & Barry Greenberg  
 Karen & Steven Grey  
 Lisa & Jason Gruenbaum  
 Abby & Larry Harris  
 Debbie & Edward Herbst  
 Chavi F. Hertz  
 Andrea Atkins & David Hessekiel  
 Arlene & Paul Hubscher  
 Mira & Alex Indich  
 Rina & Dr. Sherwin Isenberg  
 Jennifer Rothschild & Julian Izbiky  
 Alan Jacobs  
 Sharon & Steve Jaffe  
 Stacey Jasper  
 Judy & Ronald Kabrins  
 Mickey & Haim Kahtan  
 Sari Abrams & Rabbi Joseph Kanefsky  
 Jennifer & Michael Kaplan  
 Wendy & Gregg Keer  
 Leonard Kligman  
 Beverly & Shepard Kokin  
 Candace Kopel  
 Jessica Koshki  
 Linda & Dr. Harvey Kulber  
 Lena & Mark Labowe  
 Linda & Lewis Landau  
 Jennifer & Ivan Lapidus  
 Jodi Lasker  
 Nadine Lavender

Lefkowitz Family Foundation  
 Deborah & Wayne Lepoff  
 Danielle & Evan Lesner  
 Pam & Edward Levine  
 Janet Levine  
 Joel Levine  
 Israel & Nadine Levy  
 Rita & James Litton  
 Sheva Locke  
 Katherine & Russell Lynn  
 Judith & Rabbi Allen Maller  
 Sharon & Moshe Mashiach  
 Irene Matalon  
 Rabbi Dr. Myrna Matsa  
 Maxwell & Betty Cagan Scholarship Fund\*  
 Brigitte Medvin  
 Susan & Edward Meltzer  
 Rosie & Ron Merenstein  
 Dina Hellerstein & Joshua Metzger  
 Randy Michelson  
 Boaz Miodovsky  
 Heidi & Jon Monkash  
 Lori Monkash  
 Dr. Jody Myers  
 Monise & Anthony Neumann  
 Doreen & Donald Nortman  
 Fariba & Rod Nourafshan  
 Laurie & Paul Nussbaum  
 Stacie Nyborn  
 Or Hachaim - Rabbi Amram Gabay  
 Linda Liefland & Jon Orleans  
 Adina & Zorel Paritzky  
 Kathe Pilch  
 Rhoda & Joel Pinsky  
 Shirley & David Pourbaba  
 Molly & Abe Presser  
 Abbey Bachrach Presser & Jeffrey Presser  
 Ray Prinz  
 Amy & Jeffrey Rabin  
 Deborah Reissman  
 Fredi & Rabbi Joel Rembaum  
 Peter & Kathy Reynolds  
 Adele Reznikoff  
 Genia Richard  
 Susan Green & Robert Ring  
 Sheryl & Michael Rosenberg  
 Madi & Rick Rosenberg  
 Nancy & Arthur Rosenbloom  
 Janet & Bobby Rosenblum  
 Shari & Shep Rosenman  
 Gwen & Jeremy Rosenthal  
 Shauna & Aaron Ruskin  
 Sunny & Larry Russ  
 Dana Safron  
 Lisa & Scott Saliman  
 Ellie & David Sambol  
 Dr. Esther Hess & Allen Samson  
 Jessica & Mark Samuel  
 Brigitte & Jonathan Schoen  
 Aviva Schotland\*  
 Rita & Sam Schwartz  
 Dr. Doreen & Rabbi Chaim Seidler-Feller  
 Dean Shalit  
 Klara & Martin Shandling  
 Judy & Aron Shapiro  
 Bev & Dr. Robert Shpall  
 Linda & Dr. Sylvain S. Silberstein  
 Ellen Silverman  
 Leslie & Neil Silverstein  
 Sinai Temple - Rabbi Erez Sherman  
 Charles Sipkins  
 Mimi & Jerry Sisk  
 Rachel Sisk  
 Nancy & Norman Sloan  
 Andrea & Gregory Smith  
 Suzanne & Martin Solig  
 Cindy & Steven Steinschreiber

Lisa & Alan Stern  
 Liane & Benjamin Sternlieb  
 Laura Wasserman-Steuer & Michael Steuer  
 Tove & Carl Sunshine  
 Felicity & Jonathan Swerdlow  
 Ethel & Martin Taft  
 Sara & Lawrence Tanz  
 Amy Tarantino  
 Lee & Ed Tishkoff  
 Sylvia Bernstein-Tregub & Burton Tregub  
 Valley Beth Shalom  
 Bronislava Vayner  
 Liat & Michael Vorobiev  
 Deborah Eisen & Joel Weinstein  
 Julie & Eric Weissman

Lisa & Michael Wolf  
 Susan & Dr. Ronald Wolfson  
 Beverly & Rabbi David Woznica  
 Julie & Mel Wynn  
 Yeshiva Ketana of Los Angeles  
 Dalia & Aron Youngerwood  
 Elisa & George Yuster  
 Jan & Dr. Phil Zakowski  
 Judy & Marvin Zeidler

<sup>z'l</sup>: Of blessed memory

\*Funds administered by the Jewish Community Foundation of Los Angeles

\*\*Matching Gifts

## LEGACY SOCIETY

*BJE gratefully acknowledges the generosity of those who have made testamentary provisions to support the enduring mission of BJE:*

Herb Abrams  
 Greta Bayer  
 Sandy & Max Candiotty  
 Rhea & Hal<sup>z'l</sup> Coskey  
 Janet & Jake Farber  
 Robin & Gil Graff  
 Betty & Sivan<sup>z'l</sup> Hamburger  
 Miriam Prum Hess & Mark L. Hess  
 Renee & Phalen "Chuck" Hurewitz  
 Rabbi Glenn Karonsky  
 Linda Goldenberg Mayman & Robert Mayman  
 Jo Mintz-Seligman  
 Marcia & David Nimmer  
 Norman Saiger  
 Julie & Mel Wynn

*BJE is grateful to receive generous and continuing support from the legacies of:*

Max & Anna Baran, Ben & Sarah Baran & Milton Baran<sup>z'l\*</sup>  
 Hyman Bolotin<sup>z'l\*</sup>  
 Frances Brody<sup>z'l\*</sup>  
 Maxwell & Betty Cagan<sup>z'l\*</sup>  
 Tamara Ehrlich<sup>z'l</sup>  
 Jerry & Jeanine Goldberg<sup>z'l\*</sup>  
 Toba & Earl Greinetz<sup>z'l</sup>  
 Sam & Bessie Gutlin<sup>z'l\*</sup>  
 Morris Knopow<sup>z'l\*</sup>  
 Simha & Sara Lainer<sup>z'l\*</sup>  
 Henry Chaim Lerner<sup>z'l</sup>  
 Bernard & Mollie Levin<sup>z'l\*</sup>  
 Sydney M. Linden<sup>z'l</sup>  
 Sol Bear & Esther Lipshutz<sup>z'l\*</sup>  
 Bertha, Erwin & John Lustig<sup>z'l\*</sup>  
 Gisela Mandl<sup>z'l\*</sup>  
 Oskar Schindler<sup>z'l\*</sup>  
 Max Rauch<sup>z'l\*</sup>  
 Erwin Rautenberg<sup>z'l\*</sup>  
 I.A. & A.I. Reiss<sup>z'l\*</sup>  
 Beatrice Schultz<sup>z'l\*</sup>  
 Jacob Hillel Stern<sup>z'l\*</sup>  
 Ethel & Abe Weinberg<sup>z'l\*</sup>  
 Manuel & Barbara Wertheimer<sup>z'l\*</sup>  
 Fannie P. Wienir<sup>z'l\*</sup>  
 Martin F. Witkin<sup>z'l</sup>  
 Anita & Harold J. Zivetz<sup>z'l\*</sup>

*\*Funds administered by the Jewish Community Foundation of Los Angeles*

To discuss Legacy or Endowment opportunities at BJE please contact Miriam Prum Hess, 323.761.8334 or mprumhess@bjela.org

<sup>z'l</sup>: of blessed memory



### BJE Acknowledges with Appreciation:

*Program funding from the Jewish Federation, in support of:*

BJE Impact  
 California Association of Private School Organizations (CAPSO) dues (on behalf of schools)  
 Day School Capacity Building  
 First 36 Project  
 JKidLA/Concierge Program  
 L.A. Jewish Teen Initiative Programs (LAJTI)\*  
 March of the Living  
 Strengthening Jewish Day Schools through Leveraging Government Funding

*\*The LAJTI is co-funded by the Jewish Federation of Greater Los Angeles and the Jim Joseph Foundation, with seed funding provided by the Jewish Community Foundation of Los Angeles.*

#### *Program funding gifts (\$10,000+) from foundations and individuals in support of:*

##### Day School Scholarships

- Bertha, Erwin, & John Lustig Welfare Fund\*\*
- Max and Lillian Candiotty Scholarship Endowment Fund\*\*
- Milken Family Foundation
- Simha and Sara Lainer Day School Endowment Fund\*\*\*

##### Educator Awards

- Milken Family Foundation
- Simha and Sara Lainer Fund for Jewish Education\*\*

##### The First 36 Project

- Simms/Mann Family Foundation\*\*\*

##### Leading Together

- Diane P. & Guilford Glazer Fund\*\*

##### Miller Hebrew Language Proficiency Program

- Judith & Louis G. Miller

##### JKidLA/Concierge Program

- The Rosalinde & Arthur Gilbert Foundation

##### Lainer Israel Interns Program

- Ellie and Mark Lainer
- Lainer Israel Interns Endowment Fund\*\*

##### March of the Living

- Claire & Rabbi Baruch Cohon
- Erwin Rautenberg Foundation
- Jerry & Jeanine Goldberg Trust\*\*

##### Project EnAble

- Jewish Community Foundation

*\*\*Funds administered by the Jewish Community Foundation of Los Angeles*

*\*\*\*In cooperation with The Jewish Federation of Greater Los Angeles*

#### *Numerous donors who contributed to the following named funds:*

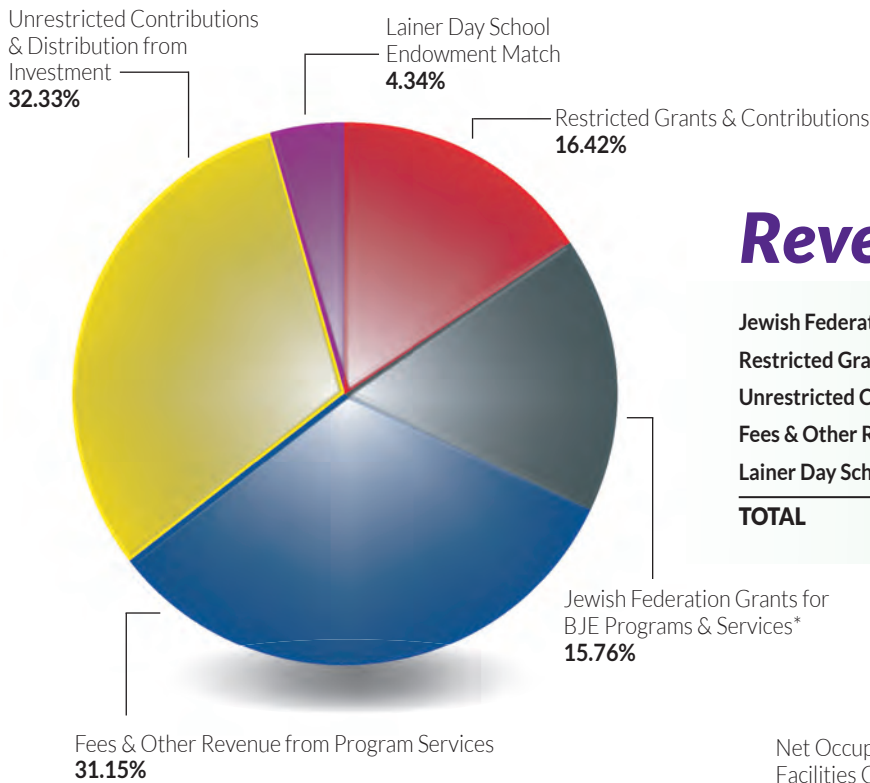
Jacob Hillel Stern Memorial Fund\*\*  
 BJE March of the Living Historian Fund  
 BJE March of the Living Student Scholarship Fund  
 Louis and Dora Stollman Scholarship Fund  
 Samuel Dinin Professional Development Fund  
 Sidonia Lax March of the Living Scholarship Fund  
 Spizman Family Education Fund

### Simha and Sara Lainer Day School Endowment Fund (Donations received in 2017-2018)

- In loving memory of Ben<sup>z'l</sup> & Sarah<sup>z'l</sup> Baran
- Elyssa & Gil Elbaz
- Miriam Prum Hess & Mark L. Hess
- Jodi & Greg Perlman
- Sheila Baran Spiwak & Dr. Alan M. Spiwak

# FINANCIALS AT A GLANCE

## Fiscal Year 2017-2018 (unaudited)

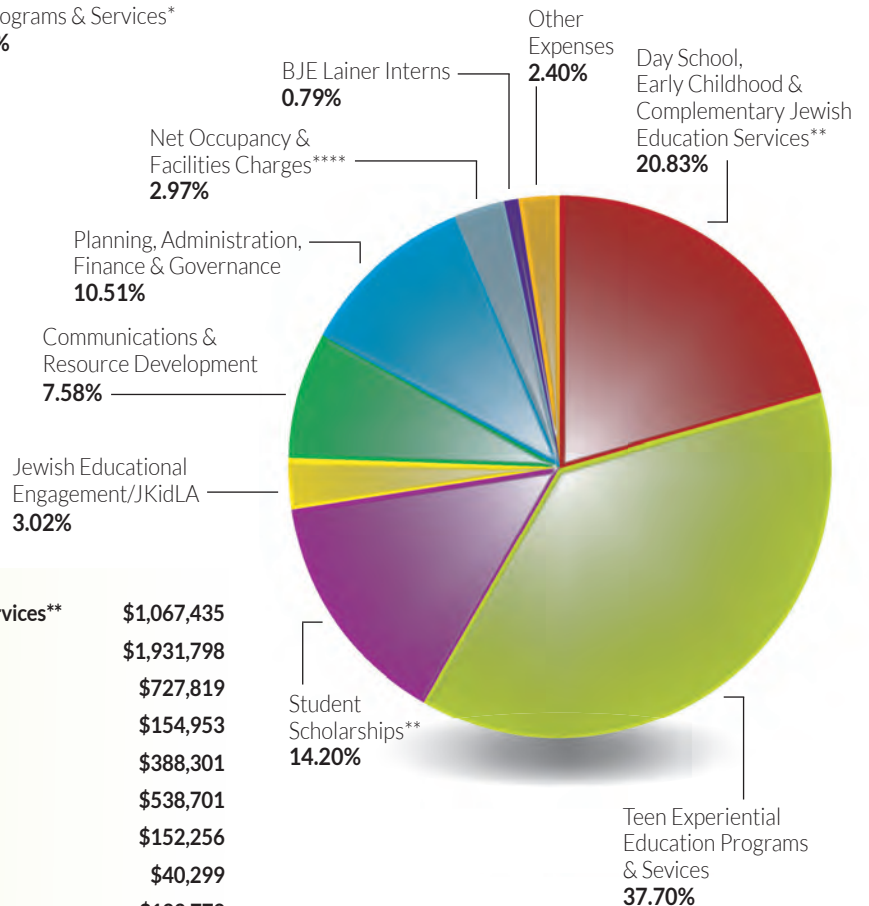


### Revenue

Jewish Federation Grants for BJE Programs & Services*	\$807,493
Restricted Grants & Contributions	\$841,415
Unrestricted Contributions & Distribution from Investment	\$1,656,623
Fees & Other Revenue from Program Services	\$1,596,327
Lainer Day School Endowment Match	\$222,482
<b>TOTAL</b>	<b>\$5,124,340</b>

### Expenses

Day School, Early Childhood & Complementary Jewish Education Services**	\$1,067,435
Teen Experiential Education Programs & Services	\$1,931,798
Student Scholarships***	\$727,819
Jewish Educational Engagement/JKidLA	\$154,953
Communications & Resource Development	\$388,301
Planning, Administration, Finance & Governance	\$538,701
Net Occupancy & Facilities Charges ****	\$152,256
BJE Lainer Interns	\$40,299
Other Expenses	\$122,779
<b>TOTAL</b>	<b>\$5,124,340</b>



\* Includes \$610,000 in program grants, \$63,241 in support of collaborative project with Simms/Mann Institute, \$129,237 for L.A. Jewish Teen Initiative jointly funded by The Jewish Federation and Jim Joseph Foundation, and \$5,015 for CAPSO dues, on behalf of BJE-accredited Day Schools

\*\* Does not include close to two million dollars in services supporting student learning, for BJE-represented Day Schools, made possible through the federal Every Student Succeeds Act and accessed through local school districts.

\*\*\* Does not include \$1,350,000 in financial assistance from The Jewish Federation in support of students at BJE-accredited Day Schools and \$34,600 in Candiotty Scholarships

\*\*\*\* Net occupancy charges paid to The Jewish Federation



NON-PROFIT ORG.  
US POSTAGE  
**PAID**  
PASADENA, CA  
PERMIT NO. 740

6505 Wilshire Boulevard  
Suite 300  
Los Angeles, CA 90048  
323.761.8605  
www.bjela.org

*Join us at these BJE events:*

**COMMUNITY EVENTS**

Day of Service Learning – 10/21/2018  
BJE Celebrates Shabbat – 11/30/2018

**DONOR EVENTS**

Fall Study Series: Jewish Continuity  
& Discontinuity in an Ever-Changing  
World (For Donors of \$1,000+)  
Valley Series – 10/8 and 10/22/2018  
City Series – 10/9 and 10/30/2018  
BJE Gala – 1/17/2019

RSVP required for all events:  
www.bjela.org | 323.761.8631

## BJE Officers 2017-2018



Mark S. Berns  
President



Keren Dunn  
Vice President



Dr. Bruce Ellman  
Vice President



Adrian Miller  
Vice President



Nurit Robin  
Vice President



Liz Rosman Schwartz  
Vice President



Steve Shapiro  
Vice President



Marci Barnhard Spitzer  
Corresponding  
Secretary



Susan Baum  
Recording Secretary



Mel Plutsky  
Parliamentarian



Bennett L. Spiegel  
Treasurer